

SMART FLOORING SYSTEM

A REVOLUTION IN OUTDOOR PAVING





Ardesia Grey 60x60

PAVE^{AND}**GO**

SMART FLOORING SYSTEM

A REVOLUTION IN OUTDOOR PAVING

INDEX

- 04 / **THE SYSTEM**
- 10 / **STRONG POINTS**
- 28 / **BENEFITS**
- 30 / **INTENDED USES**
- 32 / **INSTALLATION**
- 34 / **DESIGNS**
- 36 / **THE TURNKEY PROJECT FOR YOUR NEEDS**
- 44 / **TRIMS**
- 46 / **TECHNICAL CHARACTERISTICS AND WARRANTY**
- 49 / **CARE AND CLEANING CONDITIONS**

INNOVATIVE OUTDOOR PAVING SYSTEM

Outdoor installation made easy and immediate! A real outdoor revolution.

Pave and Go is the innovative system of tiles with vertical interlocking joint, with integral perimeter joint of 2 mm, quick and easy to install in any weather conditions and with no chemical products required. This system is ready for use at once and the durability of the integrated joint is ensured, with none of the deterioration over time found with cement grouts.



An exclusive, innovative interlocking joint system for extremely easy, quick, versatile installation of outdoor pavings with guaranteed outstanding technical performances. With Pave and Go, Emilgroup porcelain stoneware tiles 9,5 and 20 mm thick are integrated in a polyurethane backing with interlocking joints around the edge, allowing very fast, trouble-free installation without the use of cement screeds or other adhesives.

MALE-FEMALE INTERLOCKING JOINT SYSTEM

POLYURETHANE BACKING

PORCELAIN STONEWARE OF 60X60 CM . 23^{5/8}" X 23^{5/8}"
THICKNESS 9,5 MM AND 20 MM

PERIMETER JOINT OF 2 MM
(4 MM WITH TILES LAID SIDE BY SIDE)

MODULE THICKNESS 18 MM AND/OR 28 MM

Pave and Go Outdoor 18 mm is recommended for outdoor areas without vehicle access and for terraces.



Portland Grey 60x60

INSTALLATION TIME? 5 TIMES LESS THAN WITH OTHER SYSTEMS!

With the Pave and Go one-click interlocking joint installation system, specifically developed for outdoor ceramic paving, tiles can be installed quickly and easily on gravel or on top of existing pavings. The tiles are just aligned and clicked together to create a paving ready for use at once.





Ardesia Black 60x60

THE BEST WEATHER CONDITIONS FOR INSTALLATION? ANY!

The Pave and Go installation system can be used all year round, since it does not require chemical products such as levelling mixtures, draining mortars, liquid adhesive mortars, grouts or other materials. The system is therefore unaffected by weather conditions and there are no drying times. The installation temperature is -5°C to + 35°C but the material should be stored indoors.





Ardesia Gold 60x60

CLEAN? **NO GLUE! NO GROUT!** **READY FOR USE?** **AT ONCE!**

All it takes to install the Pave and Go system are a few standard tools, with no need for mortars, glues, screeds or other chemical products. This means there are no waiting times, or specific cleaning procedures, before your customer can start using the installed surfaces, on a new patio or in the outdoor area of business premises, for example.



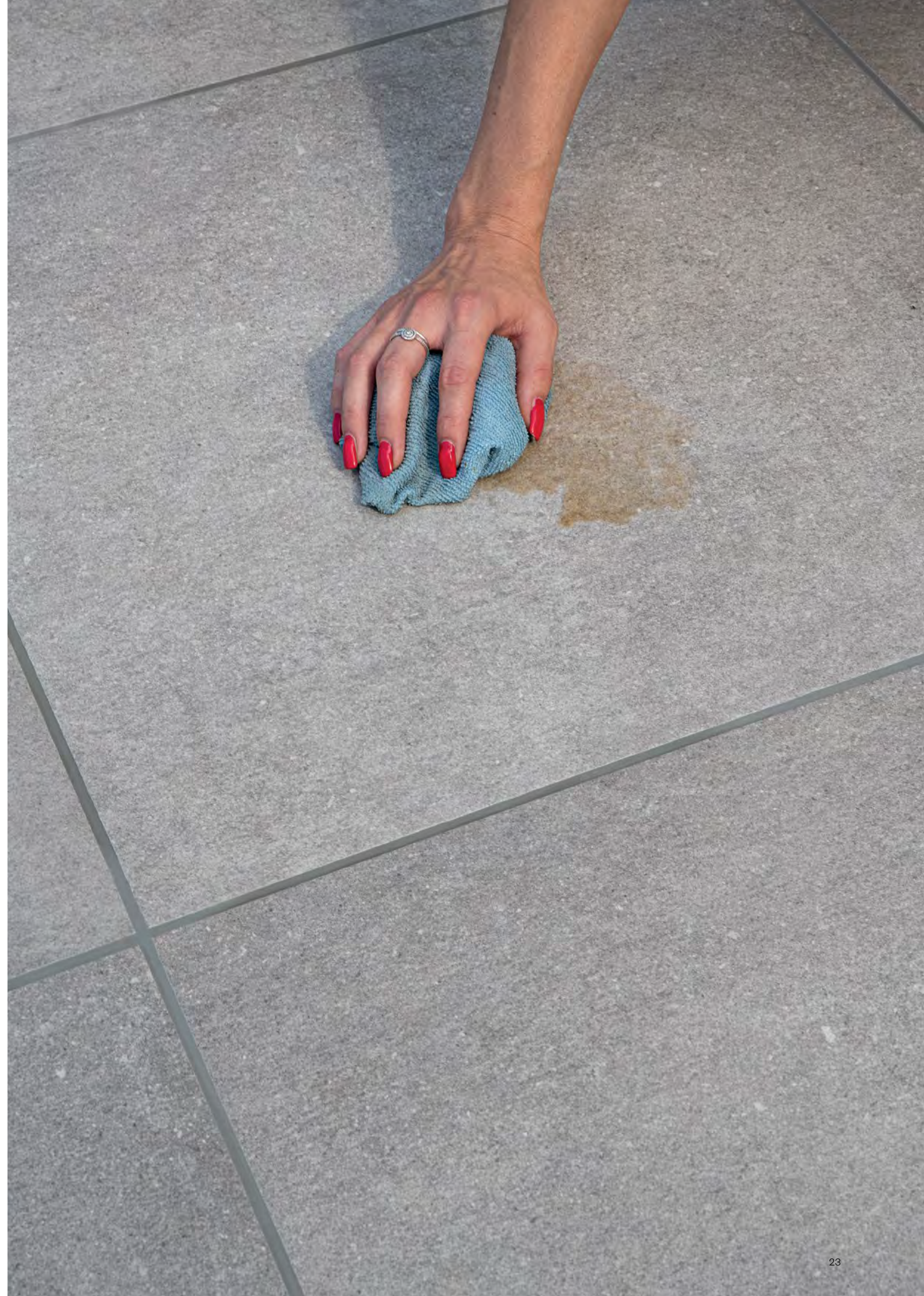


IS IT EASY TO CLEAN? ABSOLUTELY! INCREDIBLE!

Your customers will be delighted with the result: the paving, with its integrated joints, will form a single, continuous surface.

Thanks to the attractive colours and strength of the ceramic tiles, the structure will retain its beauty over time.

Taking care of an outdoor paving has never been so easy! The anti-slip surfaces, resistant to weather and dirt, can easily be cleaned with ordinary tile cleaners.





Ardesia Grey 60x60

AND IF I WANT TO CHANGE SOME ELEMENTS? VERY SIMPLE!

Pave and Go elements are very easy to replace if necessary. Want to change the pattern? Broken or damaged elements? You can remove single elements or whole groups - it's no problem with the removal tool.



BENEFITS



IMMEDIATE CONNECTION

Very quick installation times, up to 5 times faster than other systems, thanks to the innovative one-click interlocking joint system.



CAN BE WALKED OVER AT ONCE

The system can be walked over immediately after installation, since there is no need to wait for cement screeds or adhesives to dry.



SIMPLE, LOW-COST INSTALLATION

Extremely low installation costs thanks to a convenient, user-friendly male-female interlocking joint system.



CLEAN

The paving is installed without producing dirt or debris and no cement screeds or adhesives are required. This means less risk of dirtying the paving, implying time-consuming cleaning after installation.



DIRT REPELLENT

Free from even minimal porosity, the Emilgroup tiles will never be attacked by moulds or other dirt-forming agents.



CONVENIENT AND WASHABLE

The tiles are quick and easy to wash with any type of detergent or equipment.



RESISTANT TO WATER

Emilgroup tiles have water absorption of less than 0.5%. This means liquids do not penetrate into the surface or around the edges of the material.



NO STANDING WATER

If installed with a 3% slope, the system ensures complete surface water run-off, with no standing water and faster drying.



RESISTANT TO SUNLIGHT AND WEATHER

The Emilgroup tiles are highly resistant to prolonged exposure to sunlight, heatwaves and other extreme weather phenomena.



FROSTPROOF

Emilgroup tiles are extremely resistant to frost and very low temperatures.



REUSABLE

Adhesive-free installation means modules can be reused, even several times.



REPLACEABLE

Modules are easy to replace in the event of repairs or modifications.



WIDE CHOICE OF LOOKS

4 colour variants in the standard range and, on request, availability of the entire Emilgroup colour and material effect assortment in the 60x60 cm 20 mm size.



ANTI-SLIP RESISTANCE

Emilgroup tiles are manufactured with friction coefficients suitable for Outdoor applications: R11 C (A + B +C).

INTENDED USES



**BALCONIES AND
TERRACES**



**GARDENS AND
ROOF TERRACES**



**BEACHES
RESORTS**



HOSPITALITY



PUBLIC AREAS



**INSTALLATIONS
AND
TEMPORARY
STORES**

INSTALLATION



1. Ensure firm bordering of the installation area.
Angularity is imperative: 90°.
2. Lay and compact the base course.
3. Laying of fine gravel e.g. particle size 2-5 mm.



4. Levelling and screeding of the fine gravel
5. Keep approx. 2 cm below the level of the finished upper edge.



6. Start installing the elements.
7. Hold the elements at the corners to avoid displacing the fine gravel.
8. Lay the elements in an L shape and not in rows for an optimum joint pattern.



9. Check the locking of the elements and correct if necessary.



10. Check the angularity of the installed elements using a try square.
11. Correct if necessary using a hammering block



12. Now install the remaining elements starting at the right angle into the installation area.



13. Check the locking of the click system element for element and correct if necessary immediately.



14. Any trimming of the elements is performed using a fine stoneware diamond cutting disc or wet cutter with extraction.



15. Cutting of the PUR using a jigsaw with laminate blade.



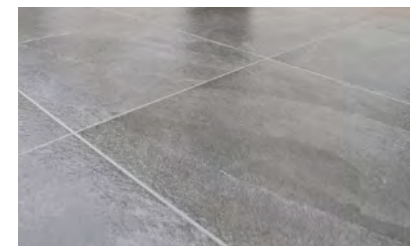
16. Compaction of the installed elements using a vibrating plate with a maximum weight of 60 kg and a 2-cm thick rubber pad.



17. The installed surface must be cleaned prior to compaction to prevent damage to the surface of the elements.



18. If required, the all-round edge expansion joints (at least 8 mm) can be filled with a suitable silicone. Ensure two-point adhesion in this case. Silicone joints generally require maintenance and must be checked and replaced at regular intervals.



19. Handover of the installed elements after final cleaning. Only use cleaning agents suitable for fine stoneware tiles.



20. Summary of tools required:
 1. Wet cutter,
 2. Jigsaw,
 3. Try square,
 4. Hammering block,
 5. Rubber mallet.

OUR DESIGN

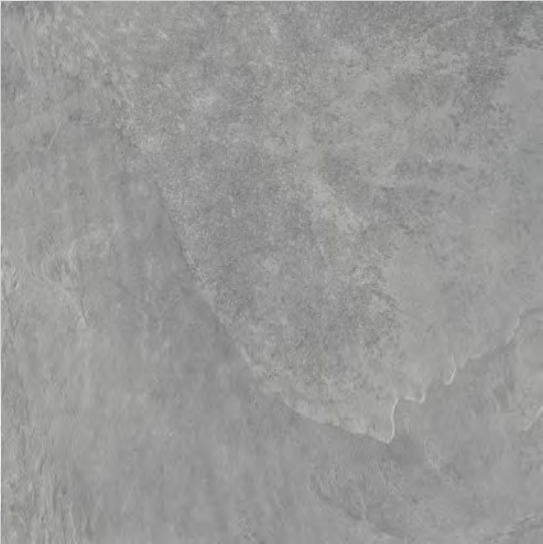
Pave and Go offers a rich selection of patterns and styles: 4 looks are immediately available from stock, and all Emilgroup collection products available in the 60x60 cm size and 20 mm thickness on request.

Products from stock - Immediate availability



ARDESIA
BLACK

EFC6
60x60 / 23^{5/8}" x 23^{5/8}"



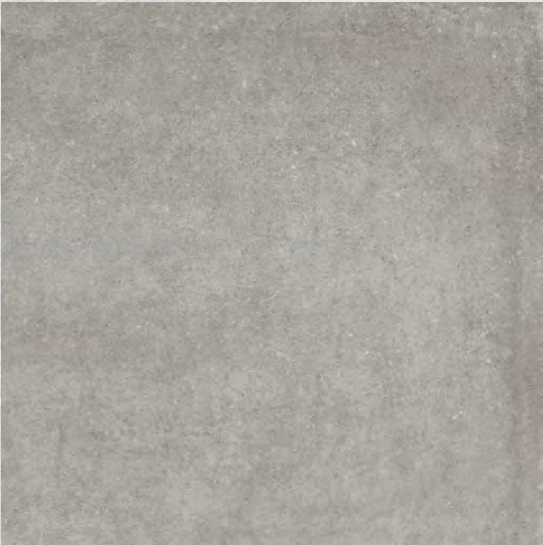
ARDESIA
GREY

EFC7
60x60 / 23^{5/8}" x 23^{5/8}"



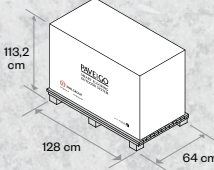
ARDESIA
GOLD

EGAE
60x60 / 23^{5/8}" x 23^{5/8}"



PORTLAND
GREY

EFC8
60x60 / 23^{5/8}" x 23^{5/8}"

PACKING AND WEIGHT			
	Box x Pal	Sqm x Pal	Kg x Pal
	64	23.04	1142

TRIMS

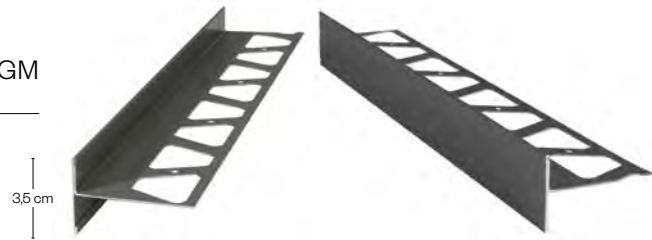
PROFILE SCHIENE AE ANODISED ALUMINIUM

10056255
2,75 x 250 cm - 1¹/₈" x 98⁷/₁₆"



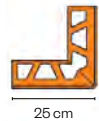
PROFILE BARA RT COLOURED ALUMINIUM GM

10056257
3,5 x 250 cm - 1³/₈" x 98⁷/₁₆"



PROFILE OUTSIDE CORNER BARA RT

10055919
25 x 25 cm - 9¹³/₁₆" x 9¹³/₁₆"



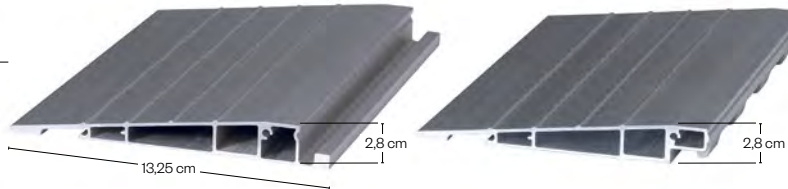
PROFILE CONNECTION BARA RT

10055922
H 6,5 cm - 2³/₄"



BRUSHED ALUMINIUM RAMP 28 mm

10060273 (female)
10060274 (male)
13,25 x 100 x 2,8H cm - 5³/₁₆" x 39⁹/₁₆" x 1¹/₈"H



EXCELLENCE CERTIFIED BY THE HIGHEST AUTHORITIES



In 2018 the Pave and Go system was awarded innovation certification by Galabau, the top international exhibition of solutions for gardening and landscape architecture. A major award, reflecting the excellent technological and functional quality on which the system is based.

TECHNICAL CHARACTERISTICS AND WARRANTY

Porcelain Stoneware

PRODUCT TECHNICAL CHARACTERISTICS			
Collection: Pave&go Outdoor - Surface: Outdoor		Brand: Ceramic tiles	
Size (cm): 60x60		Thickness (mm): 20 mm	

Compliant with standard EN 14411:2016 annex G group Bla - GL
Compliant with standard ISO 13006:2018 annex G group Bla - GL

Technical Features	Testing Method	Meas. unit	Average Typical Values	Established limits		
DIMENSIONAL PROPERTIES AND SURFACE QUALITY						
DIMENSIONS				NOMINAL LENGTH OF EDGE N (cm) 7≤N<15	NOMINAL LENGTH OF EDGE N (cm) N≥15	
Length and width (*)	ISO 10545-2	(mm) (%)	Complies with the standards	±2% (max 5mm)	±2% (max 5mm)	±2% (max 5mm)
Length and width (**)						
Not Rectified			± 0.2% (±1.0 mm)	±0,9 mm	±0,6 %	±2,0 mm
Rectified				±0,4 mm	±0,3 %	±1,0 mm
Thickness						
Not Rectified			Complies with the standards	±0,5 mm	±5 %	±0,5 mm
Rectified				±0,5 mm	±5 %	±0,5 mm
Straightness of sides						
Not Rectified			± 0.2% (±1.5 mm)	±0,75 mm	±0,5 %	±1,5 mm
Rectified				±0,4 mm	±0,3 %	±0,8 mm
Rectangularity						
Not Rectified			± 0.2% (±1.5 mm)	±0,75 mm	±0,5 %	±2,0 mm
Rectified				±0,4 mm	±0,3 %	±1,5 mm
Surface Flatness c.c - e.c. - w.						
Not Rectified			± 0.3% (±1.5 mm)	±0,75 mm	±0,5 %	±2,0 mm
Rectified				±0,6 mm	±0,4 %	±1,8 mm
Surface Quality				Complies with the standards	≥95%	

PHYSICAL PROPERTIES				
Water absorption	ISO 10545-3	(%)	≤ 0,5	Eb ≤ 0,5 (Individual maximum value 0,6%)
Water absorption	ASTM C373-14	(%)	≤ 0,5	
Modulus of rupture	ISO 10545-4	(N/mm²)	≥ 45	R ≥35 (Individual minimun value 32 N/mm²)
Breaking Strength	ISO 10545-4	(N)	≥ 12000	≥1300 (Thickness ≥7,5 mm) ≥700 (Thickness < 7,5 mm)
Breaking Strength	ASTM C648-04	(LBF)	≥ 2500	Floor ≥ 250 LBF - Individual minimum value 225 LBF
Resistance to surface abrasion Internal	Interne Verfahren Internal Method		As declared in catalog	
Resistance to surface abrasion Internal	ISO 10545-7		See attached table	Abrasion class and cycles passed
Linear thermal expansion coefficient	ISO 10545-8	(x(10)-6/°C)	≤ 9	Declared value (EN 14411:2016) / Test Method available (ISO 13006:2018)
Thermal shock resistance	ISO 10545-9		Complies with the standards	Declared value (EN 14411:2016) **** / Test Method available (ISO 13006:2018)
Crazing Resistance	ISO 10545-11		Complies with the standards	Pass according to EN ISO 10545-1 (EN 14411:2016) / Required (ISO 13006:2018)
Frost resistance	ISO 10545-12		Complies with the standards	Pass according to EN ISO 10545-1 (EN 14411:2016) / Required (ISO 13006:2018)
Reaction to fire	-	-	Class A1 FL / A1	Class A1 or Class A1 FL (EN 14411:2016)
Colour resistance to light exposure	DIN 51094		Complies with the standards	No sample must show noticeable colour modifications.

PRODUCT TECHNICAL CHARACTERISTICS	
Collection: Pave&go Outdoor - Surface: Outdoor	Brand: Ceramic tiles
Size (cm): 60x60	Thickness (mm): 20 mm

Compliant with standard EN 14411:2016 annex G group Bla - GL
Compliant with standard ISO 13006:2018 annex G group Bla - GL

Technical Features	Testing Method	Meas. unit	Average Typical Values	Established limits
CHEMICAL PROPERTIES				
Resistance to chemicals for household use and swimming pool salts	ISO 10545-13		A	GB Minimum (EN 14411:2016) - GB Minimum (ISO 13006:2018)
Resistance to low concentrations of acids and alkalis	ISO 10545-13		LA	Declared value (EN 14411:2016) - Test Method available (ISO 13006:2018)
Resistance to high concentrations of acids and alkalis	ISO 10545-13		HA	Declared value (EN 14411:2016) - Test Method available (ISO 13006:2018)
Chemical Resistance	ASTM C650-04		Not Affected	Declared value (ANSI A137.1-2012)
Stain resistance	ISO 10545-14		Class 5	Minimum class 3 (EN 14411:2016) - Minimum class 3 (ISO 13006:2018)
Stain resistance	ASTM C1378-04		Not Affected	Declared value (ANSI A137.1-2012)

ANTISLIPPERY PROPERTIES				
Slipperiness Resistance: Ramp Method	DIN 51130 B.G.R. 181		R11	from R9 to R13
Slipperiness Resistance: B.C.R.	D.M. N.236 14/6/89		μ > 0,40	μ > 0,40
Slipperiness Resistance: Pendulum	ENV 12633 BOE N.74 del 2006		Class 3	From Class 0 to Class 3

RESISTANCE TO SURFACE ABRASION – ISO 10545-7	
Dark colors	Class 4 - Visible abrasion after 2100 cycles
Light colors	Class 5 - Visible abrasion after > 12000 cycles

* The work size shall be chose, for non-modular tiles, so that the difference between the work size and the nominal size is:
** The deviation, in percent, of the average size for each tile (2 or 4 sides) from the work size.
**** See Table 2 for uses where it is applicable.
c.o Centre curvature, related to diagonal calculated from the work sizes.
e.c. Edge curvature, related to the corresponding work sizes.
w. Warpage, related to diagonal calculated from the work sizes.

PRODUCT TECHNICAL CHARACTERISTICS	
Collection: Pave&go Outdoor - Surface: Outdoor	Brand: Ceramic tiles
Size (cm): 60x60	Thickness (mm): 20 mm

Static test - Load test on the element resting on 4 pedestals	Standard of reference	Value declared
Concentrated static breaking load (centre of panel)*	UNI EN 12825	≥ 7,0 kN kH
Concentrated static breaking load (centre of side)*		≥ 6,0 kN kH
Concentrated static breaking load (diagonal)*		≥ 6,0 kN kH

The specimen tested consists of a raised floor panel measuring 600x600 mm with thickness 20 mm, in porcelain stoneware.
The panel was tested by placing it on four adjustable-height plastic pedestals 100 mm tall.

A similar static load test was performed following an in-house procedure based on some of the recommendations of the 2003 edition of the UNI EN 12825 standard, for indoor raised floors with 5 pedestals.
The slab was tested by placing it on 5 plastic pedestals, with one pedestal in the centre of the slab and the others in the 4 corners.

Element permanent deformation test	UNI EN 12825	Test passed
Dynamic load - Hard body impact test	UNI EN 12825	Test failed
Dynamic load - Soft body impact test	UNI EN 12825	Test passed
Vertical load test on pedestal	UNI EN 12825	Test results declared by the pedesta's supplier

TYPE OF TEST	TEST OUTCOME		
Static test - Load test on the element	Standard of reference	Value declared	Classification
Breaking strength **	UNI EN 1339 ANNEX F	Classe del carico di rottura 110 Classe di resistenza a flessione 2	UI1

* Values refer to the test methods for plain concrete pavings and complementary pieces.
** The breaking strain value (expressed in Newtons [N]) is the force required to break the panel in the test points.

TECHNICAL CHARACTERISTICS AND WARRANTY



Pave&Go Technical System

SIZE AND GENERAL INFORMATION	UNIT	SPECIFICATION
System size ¹	mm	602 x 602
Total System height ²	mm	28.0
Surface		Ceramic tile
Tile size ³	mm	598 x 598 x 20.0
Backside of the flooring system		Polyurethane locking system
Storage		Indoor storage is recommended
Water drainage		A subfloor drainage is strongly recommended
Laying temperature		-5 to + 35°C ⁴
UV resistance		Requirements fulfilled: no cracks, no blistering ⁵
Frost resistance According to EN 10545-12: 2000		PASS
Thermal Shock resistance According to EN 10545-9: 2000		PASS
INFORMATION FOR INSTALLATION		
Installation methods - Installation methods		Cross-bond, half-offset or random structure
Possible staggered installation (multiples of)	mm	50
Usage - laying		on 4cm grit ⁶
Recommended Sloping	%	2 ⁷
DATA FOR THE LAID ELEMENTS ⁸		
Weight approx.	kg / m ²	46
Average width of joint	mm	4
Fire behaviour according to DIN EN 13501(2010-01)		Bfl-s1
Resistance of the joints to liquids		Very good ⁹
Load values		It depends on subfloor
Anti-Slip-Class, abrasive-strength		According to the series Technical Sheet

¹ Tolerance element size: -0,0% / +0,07% of the nominal dimension.
² Thickness tolerance: ±5% of the nominal dimension.
³ See tile's tolerance from pag. 1, Ceramic Tile Technical Sheet.
⁴ Observe the Information on laying floor system PAVE & GO. The substructure has to be permanently stable. The local conditions, regulations and standards must be observed.
⁵ Ibidem.
⁶ Please note the installation guidelines for Pave&Go systems.
⁷ Polyurethane as material for the joints does not absorb any liquids. Stains can be removed. Organic liquids, especially solvents, can cause changes in colour when left too long on the joints.
⁸ Please refer to Pave & Go the cleaning instructions for flooring system.
⁹ Please note the installation guidelines for Pave&Go systems.
¹⁰ Polyurethane as material for the joints does not absorb any liquids. Stains can be removed. Organic liquids, especially solvents, can cause changes in colour when left too long on the joints.
Please refer to Pave & Go the cleaning instructions for flooring system.

CARE AND CLEANING CONDITIONS

ROUTINE CLEANING INSTRUCTIONS

Emilceramica products are easy to care for, confirming our commitment to the environment. However, cleaning procedures and frequency will always depend on the context in which the tiles are used.

For effective care, we recommend the following:

- 1. Do not leave dirt on the surface for too long.
- 2. Wash surfaces regularly with neutral or degreasing detergents diluted in hot water, following the instructions on the pack.
- 3. Rinse with clean water.

EXTRAORDINARY CLEANING INSTRUCTIONS

Extraordinary cleaning procedures are needed if the floor becomes stained or dirty with specific substances due to accidents. In this case, professional, alkaline detergents, specifically developed for the type of dirt to be removed (see table of examples), are required.

For effective extraordinary cleaning, we recommend the following:

- 1. Wash with water to remove superficial dirt.
- 2. Apply the alkaline product diluted in a solution of about 3% to the surface. The detergent concentration can be gradually increased to deal with difficult cases where coatings or unusually tough stains have to be removed.
- 3. Wait 7/10 minutes. For stubborn stains, the abrasive effect can be increased by using a dry powder soap, sprinkling it over the detergent at the end of the waiting time.

CARE AND CLEANING CONDITIONS

TYPE OF DIRT	RECOMMENDED CLEANER					
	Solvent		Acid detergent		Alkaline detergent	
	FILA	FABER	FILA	FABER	FILA	FABER
Beer, wine					PS - 87 PRO	Stain Remover Powder
Coffee					PS - 87 PRO	Stain Remover Powder
Tar	Solv	Solvent Stripper				
Rubber	Solv	Solvent Stripper				
Cement			Deterdek Pro	Cement Remover		
Candle wax	Solv	Solvent Stripper				
Coca cola					PS - 87 PRO	Stain Remover Powder
Lime bloom			Deterdek Pro	Cement Remover		
Plaster			Deterdek Pro	Cement Remover		
Animal fats					PS-87 PRO	Deep Degreaser
Vegetable fats					PS-87 PRO	Deep Degreaser
Ice-cream					PS-87 PRO	Deep Degreaser
Inks					PS - 87 PRO SR 95	Deep Degreaser
Marker pens					PS-87 PRO	Deep Degreaser
Ketchup					PS - 87 PRO	Deep Degreaser
Mayonnaise					PS - 87 PRO	Deep Degreaser
Jams					PS - 87 PRO	Deep Degreaser
Engine / silicone oils	Solv	Oil & Grease Remover			PS - 87 PRO	Deep Degreaser
Flaxseed oil	Solv	Oil & Grease Remover				
Tyre					PS - 87 PRO	Deep Degreaser
Metal residues			Deterdek Pro	Tile Cleaner		
Resins or enamels			No Paint Star	Epoxy Cleaner		
Lipstick					PS - 87 PRO	Deep Degreaser
Rust			Deterdek Pro	Margel Plus / Oxidant		
Grouting material			Deterdek Pro	Margel Plus / Oxidant		
Emulsion paints			Deterdek Pro	Tile Cleaner		
Silicone	Solv	Epoxy Cleaner				
Chewing-gum					PS - 87 PRO	Deep Degreaser

IMPORTANT!
Take great care when using acids or other chemical products; comply strictly with the instructions provided by the producer on the pack. Always start using products diluted 1:5 in water and gradually increase the concentration if the stain is not removed.

PAVE^{AND}**GO**





paveandgo.shop